



ROYAL AUSTRALASIAN COLLEGE OF SURGEONS

A.C.N. 004 167 766

**MEDICAL EQUIPMENT MAINTENANCE PROJECT
FOR THE PACIFIC**

**GUIDELINES
FOR THE DONATION OF
MEDICAL EQUIPMENT
TO
PACIFIC ISLAND COUNTRIES**

A guide for Donors and Recipients

Developed in association with AusAID



Introduction

The process of equipment donation to Pacific Island Countries is a very important. In many cases it can be the mainstay of their equipment acquisition programmes where often there are insufficient funds available for new and replacement equipment.

The process is carried out by donors and recipients and is often flawed. Donated equipment is almost always given through a genuine desire to help but is sometimes inappropriate for the recipient country. It may be:

- unserviceable,
- at the end of its life cycle,
- not supported by the manufacturer,
- spare parts may not be available,
- accessories and attachments may not be provided,
- consumables may not be provided and may not be available,
- the wrong voltage and frequency for the recipient country,
- unfit for use in the environment present in Pacific Island Countries, or
- supplied without service manuals and user manuals

Sometimes equipment lies idle in recipient countries either in shipping containers or in hospitals for the want of instruction or attachments and accessories to make it work.

This guideline aims to make the process of donation more successful for the donors and recipient countries rather than to stop the flow of donations. It is intended to improve the quality of donated medical equipment not merely to increase the quantity of donations which flow into recipient countries.

The guideline should be read in conjunction with the WHO, ACCE, Vanuatu and PNG MEMP guidelines.

Matching Donated Equipment to the Needs of Recipient Countries

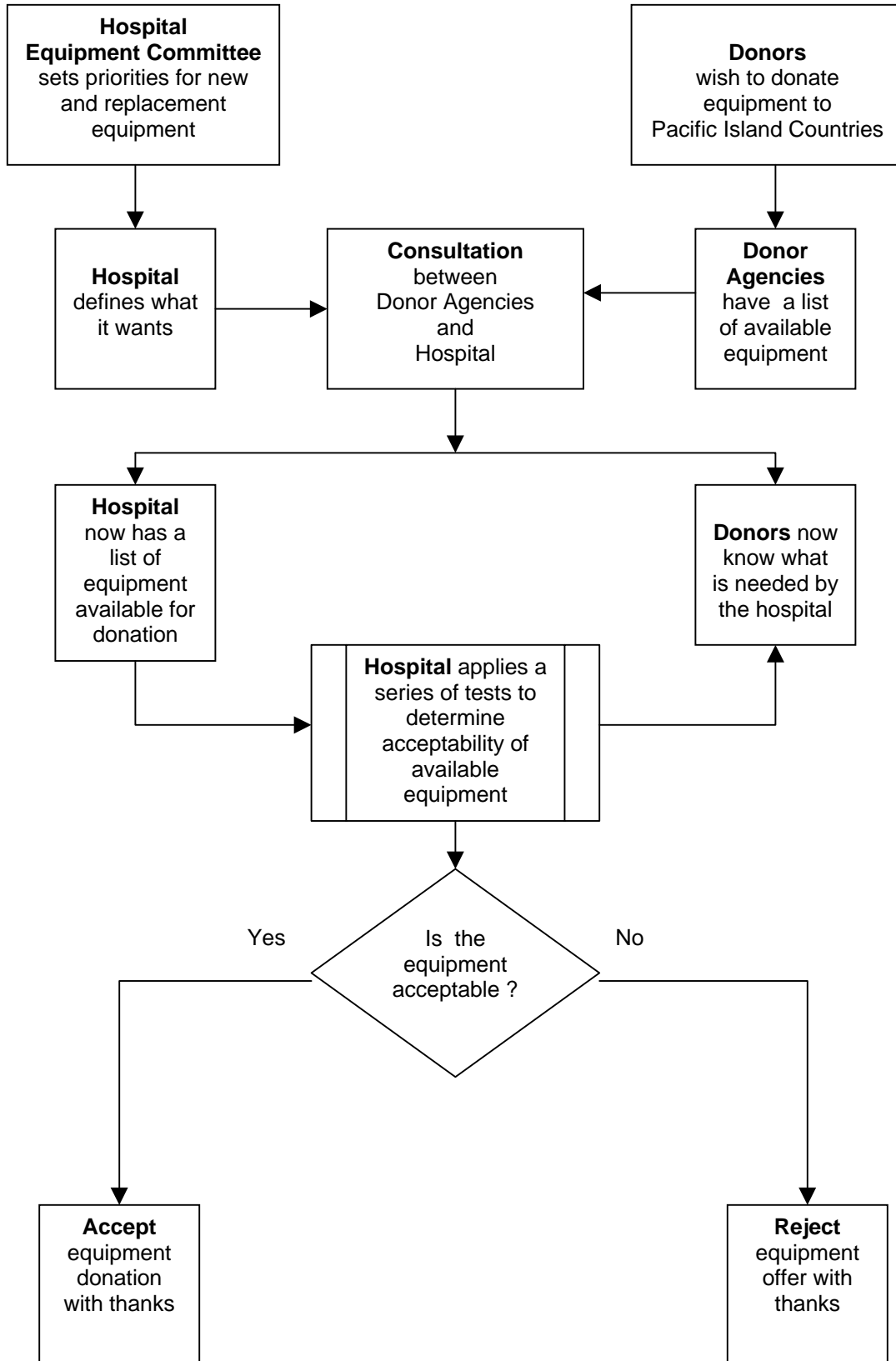
- The process of matching needs depends on communication between the donor and the recipient
- It should involve the Hospital Medical Equipment Committee as the sole body empowered to negotiate on behalf of the Hospital for the acquisition of medical equipment by donation. The Medical Equipment Committee is constituted to assess needs and plan for the acquisition of new and replacement equipment for the Hospital.
- Donor agencies are encouraged to deal only with the Medical Equipment Committee. This will ensure that supply of equipment is matched to the clinical and financial needs of the hospital. It will also assist with efforts to standardise equipment.

- Consultation between the donor and recipient provides an opportunity to maximise the benefits to be derived from donated medical equipment and the genuine goodwill and enthusiasm of potential donors .

General Principles Applying To The Donation Of Equipment

- Used electrical or electronic equipment will not be accepted if more than five years old on the date of acceptance in Pacific Island Countries or if no longer supported by the manufacturer.
- To be of any use donated electrical, electronic or mechanical medical equipment must be supplied in good working condition complete with:
 - accessories and attachments for immediate operation
 - operation and service manuals in English and details of availability of user training
 - consumables for one year's normal operation
 - reasonable certainty about the availability of consumables for at least five years
 - certification of electrical safety and correct operation by a competent biomedical engineer or biomedical service organisation prior to shipment.
 - Pacific standard 240V . 50Hz mains power supply
- Wherever possible donated equipment should be consistent with the current standardisation guidelines used for the procurement of medical equipment. This will be easier to achieve for new equipment donations than for second-hand donations.
- There are many advantages in standardising equipment types. Standardisation facilitates user training, the purchase of consumables, the bulk purchase of spare parts and the overall management of the equipment inventory.
- New equipment donors should be advised of the standardisation guidelines as part of the consultation process.
- Second-hand donated equipment that meets the other acceptance criteria above, should not be rejected on the basis of the standardisation guidelines alone.
- Non-electrical equipment (beds, drip stands, stainless steel trolleys, over bed tables, bassinets, etc.) in sound working order and with five years expected lifetime will be accepted if required by a recipient health facility.

PROCESS FOR GIVING AND RECEIVING DONATIONS



TEST SCHEDULE FOR ACCEPTANCE

